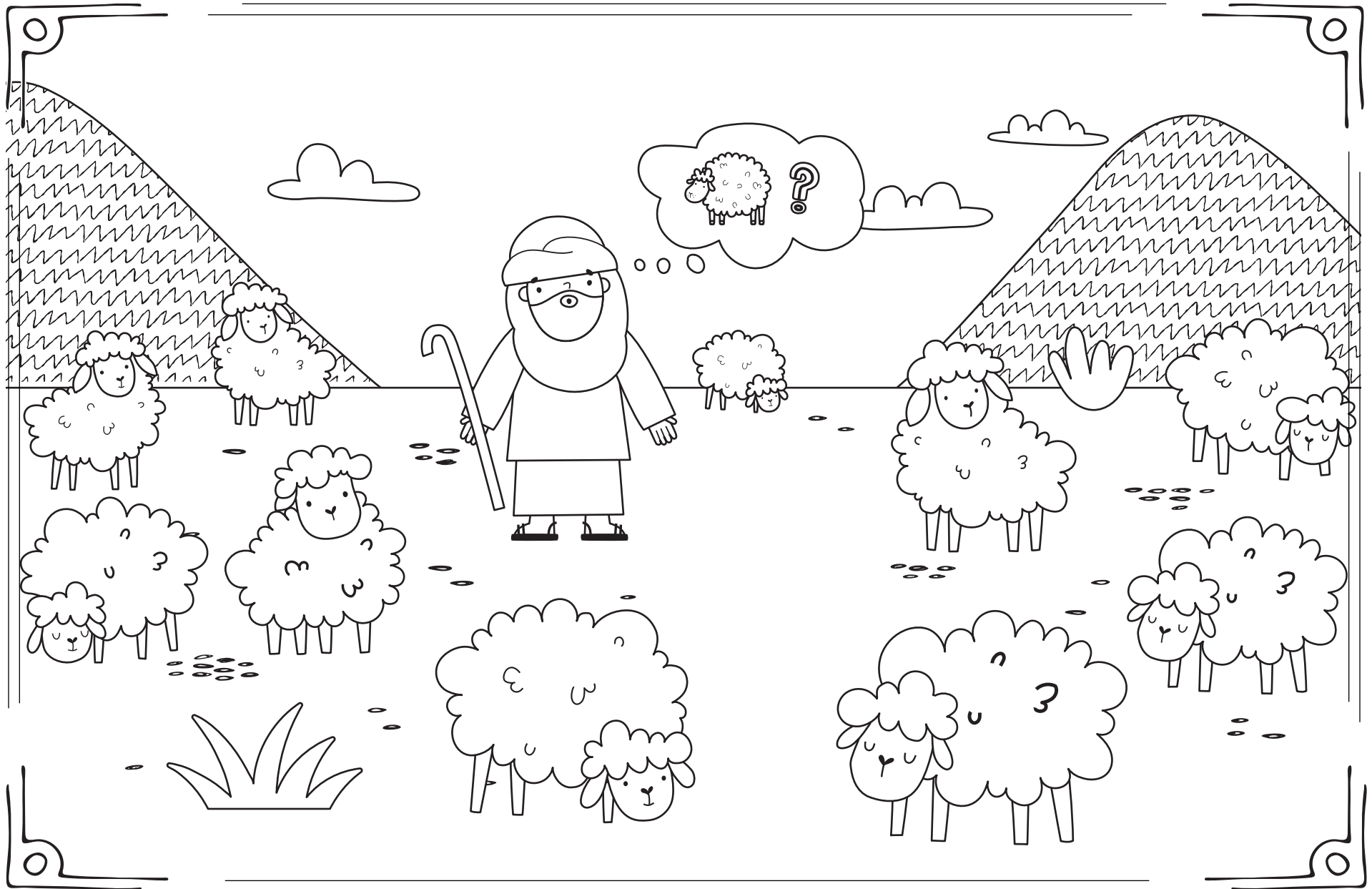
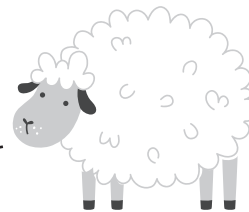
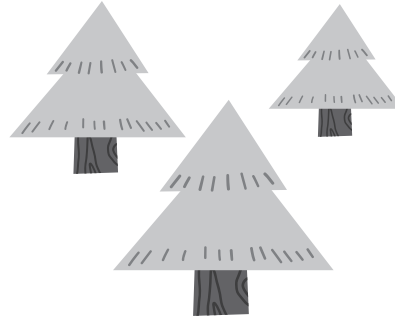


THE PARABLE OF THE LOST SHEEP



Lost Sheep Maze

Draw a line to help the shepherd find his lost sheep.



We all are the work of your hands.
(ISAIAH 64:8b)

Take it Home

ASK THESE QUESTIONS TO
REVIEW TODAY'S SESSION
WITH YOUR PRESCHOOLER:

- * Today's Super Clue is a game piece. What does a game piece help you remember? (*God made me valuable.*)
- * What does a shepherd do when he realizes he has lost a sheep? (*The shepherd goes and looks for his lost sheep when he realizes it is missing.*)
- * God made you valuable. Why do you think you are valuable to God? (*He created me, and He loves me!*)
- * What did you learn about God today?

OUR BIG DEAL:

Oh Wow! God Made Me Special!

TODAY WE LEARNED:

God Made Me Valuable
The Parable of the Lost Sheep
(Luke 15:1-7)

TALK ABOUT IT:

Who can you tell that they
are valuable to God?